

# THE UPLANDS, MANOR - PETITION REQUESTING FOR A CHANGE OF SURFACE MATERIAL WHEN RECONSTRUCTING THE FOOTWAYS IN THE UPLANDS, RUISLIP, HA4 8QN

<b>Cabinet Member(s)</b>	Councillor John Riley
<b>Cabinet Portfolio(s)</b>	Cabinet Member for Public Safety and Transport
<b>Officer Contact(s)</b>	Gurmeet Matharu, Infrastructure, Transport & Building Services Directorate
<b>Papers with report</b>	Appendix A – location plan and photographic evidence of footway surface

## HEADLINES

<b>Summary</b>	To inform the Cabinet Member that a petition has been received from residents requesting a change in the surface materials to the footways in The Uplands which differs from the currently approved scheme.
<b>Putting our Residents First</b>	This report supports the Council objective of Our People. The objection to the consultation will be considered in relation to the Council's strategy for road safety.
<b>Financial Cost</b>	Subject to the outcome of discussions with petitioners the Cabinet Member may be minded that the current approved scheme is to renew footways surface on a "like for like basis." Any changes to this will have a cost increase of 60% which will need to be funded.
<b>Relevant Select Committee</b>	Public Safety & Transport.
<b>Relevant Ward(s)</b>	Manor.

## RECOMMENDATIONS

That the Cabinet Member for Public Safety & Transport:

1. meets with petitioners and listens to their request for a change in surface materials, and
2. subject to the outcome of the above, asks officers to seek additional funds or defer the scheme until funds become available.

## Reasons for recommendations

The Petition Hearing will provide a valuable opportunity to hear directly from the petitioners of their concerns and suggestions.

## Alternative options considered / risk management

None at this stage.

## Select Committee comments

None at this stage.

## SUPPORTING INFORMATION

The Council has received a petition submitted by residents signed under the following heading:

*“To part repave the pedestrian pathways to The Uplands, Ruislip, HA4 with mostly paving slabs (blocks)/part tarmac in a similar/same style as that installed in neighbouring streets, for example The Ridgeway, Ruislip, HA4”.*

The petition requests that the existing tarmac pavement be replaced with paving slabs and tarmac, like that found on The Ridgeway in Ruislip. The Ridgeway resurfacing was undertaken on a like-for-like basis, which meant that the existing paving and bitumen verge were resurfaced.

The Uplands, on the other hand, has a bitumen surfaced footpath. The current proposal is to reconstruct for this road is a bitumen footway on a “like-for-like basis” in accordance with the Council’s policy.

An “intelligent intervention” was used to deal with this petition, and a letter outlining the proposal was sent to the lead petitioner. The lead petitioner is unsatisfied with the proposed tarmac resurfacing. The request for a change of surface material to replace the existing footway with paving slabs and bitumen verge will incur an additional cost of 60%, more than a like-for-like replacement, since full depth reconstruction of the footway is required.

The approved budget for these works is £86,579. Furthermore, a detailed assessment of the existing utility ducts is required to determine the viability of a new construction method. The Uplands becomes Myrtle Avenue and changing the material type will have a negative impact on the street scene.

## Financial Implications

The 2021/22 Highways Structural Programme has had capital release to carry out footway works to The Uplands, Ruislip Manor for £87k. If the Cabinet Member agrees to uphold the petition, this will require a change in the material which will increase the cost of the footway works by 60% (£52k) to £139k.

The 2021/22 Highways Structural Programme budget of £10,471k has been fully released. The additional costs of £52k will have to be funded from the approved 2022/23 budget of £6,000k and the works will have to be deferred.

## **RESIDENT BENEFIT & CONSULTATION**

**The benefit or impact upon Hillingdon residents, service users and communities?**

To allow the Cabinet Member to consider the petitioners' request.

**Consultation carried out or required**

None at this stage.

## **CORPORATE CONSIDERATIONS**

**Corporate Finance**

Corporate Finance has reviewed the report and concurs with the financial implications contained within the report noting the additional cost and delay resulting from any change to materials.

**Legal**

The Borough Solicitor confirms that there are no specific legal implications arising from this report.

**Infrastructure / Asset Management**

The footway improvement programme contains schemes to limit the deterioration of the fabric of the Borough's highway asset that can result in serious failure of footways, verges and improve the serviceability of the highway network for the benefit of residents and other road users.

The roads are selected from structural condition surveys undertaken by independent consultants to undertake condition surveys of the entire highway network in the borough. The surveys inform future maintenance decisions and consideration of footways for inclusion in preparing Highways planned works programmes.

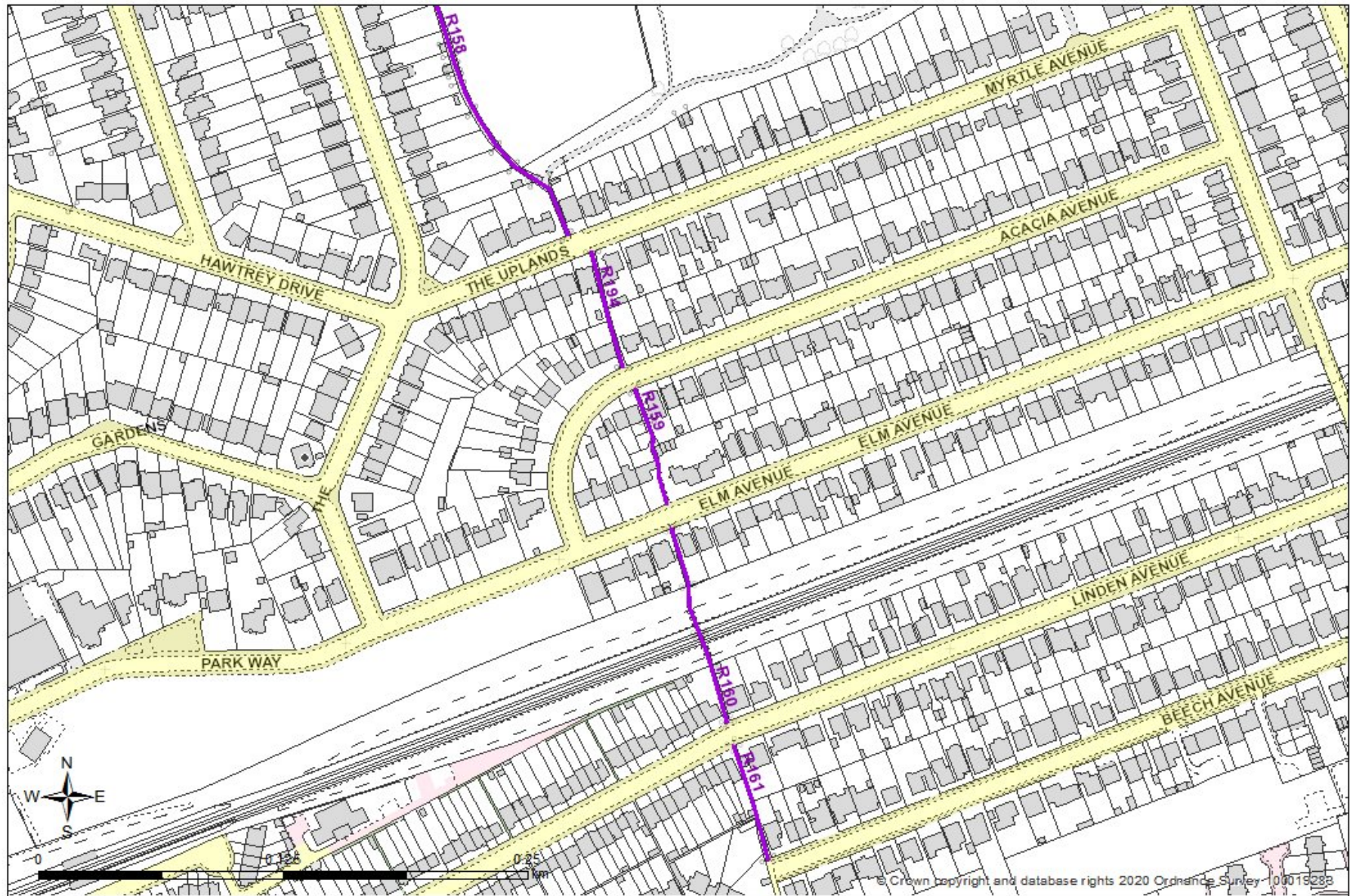
## **BACKGROUND PAPERS**

Petition received.

## **TITLE OF ANY APPENDICES**

Appendix A – location plan and photographic evidence of footway surface

# APPENDIX A - GIS Location Map



## Map Notes



The Uplands – showing existing footways surface



The Ridgeway – before FW works



The Ridgeway – after FW works